



# RECREATION BAY REMEDIATION

July 3<sup>rd</sup>, 2019





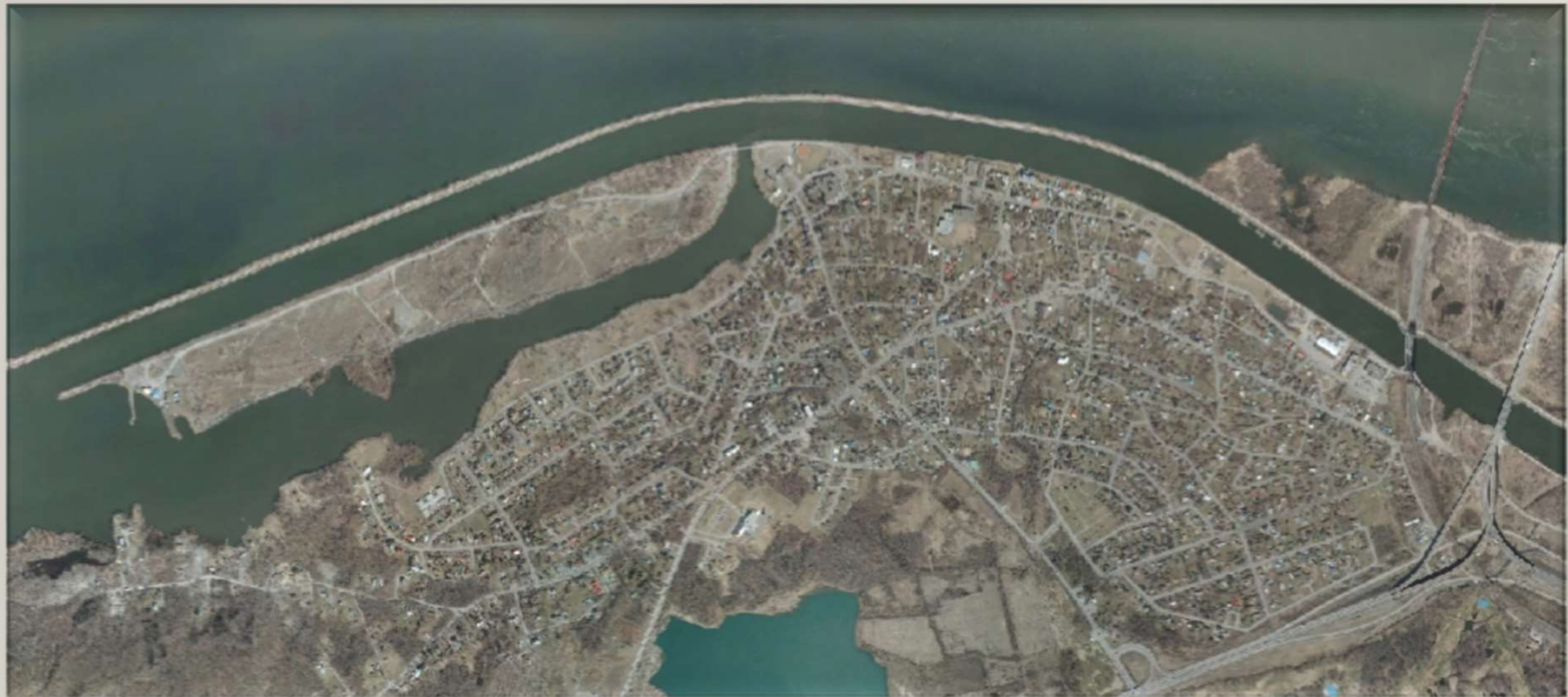


## Seaway in Development





# The Seaway Completed

















# Three main elements

- Improve flow and sediment movement
- Naturalize shorelines and island
- Improve existing wetlands and habitat

## Improve Flow Rate

- Dredging
- Aquatic Plant Removal
- Increase Seaway Flow







Dewatering



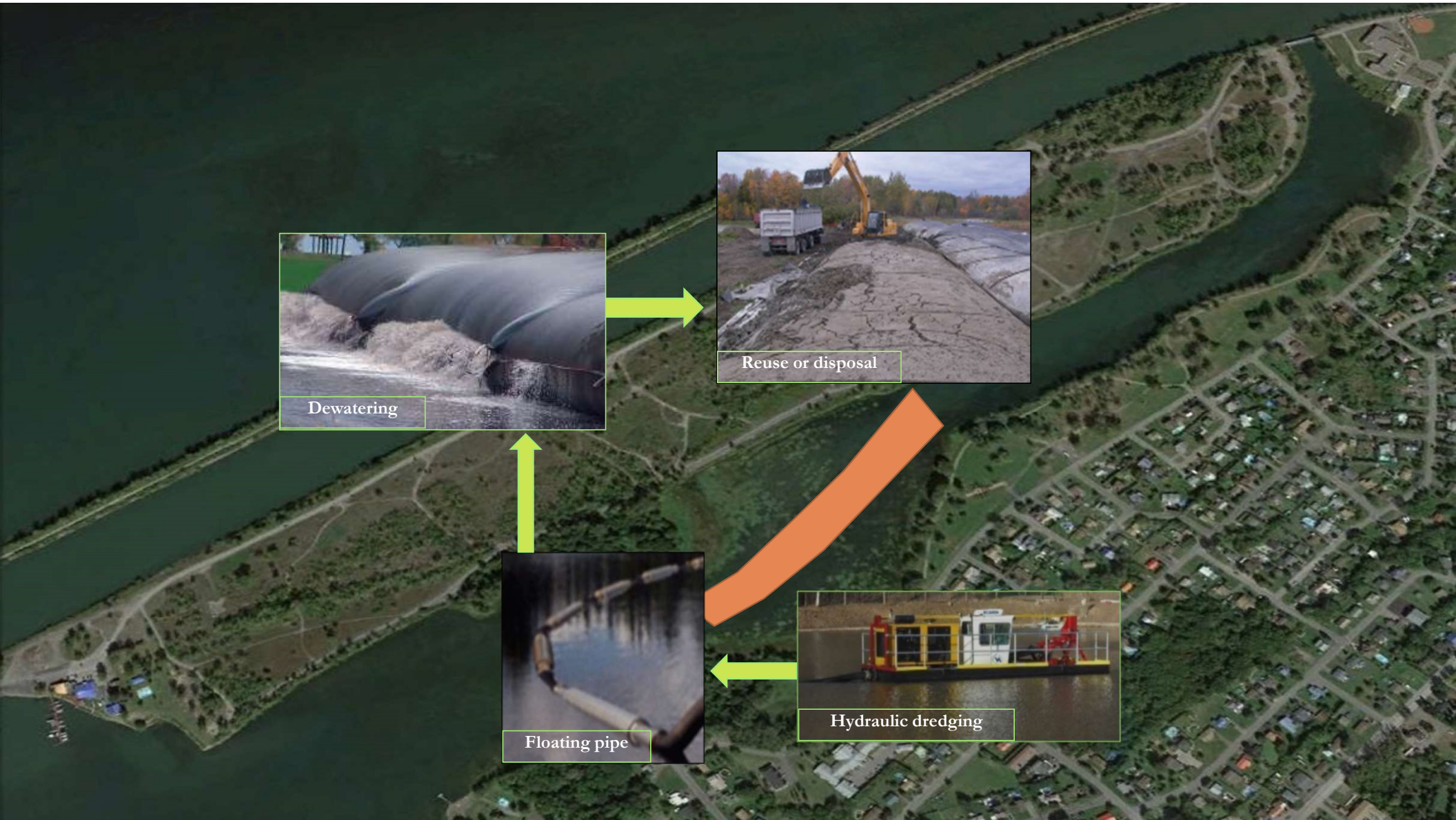
Reuse or disposal



Floating pipe



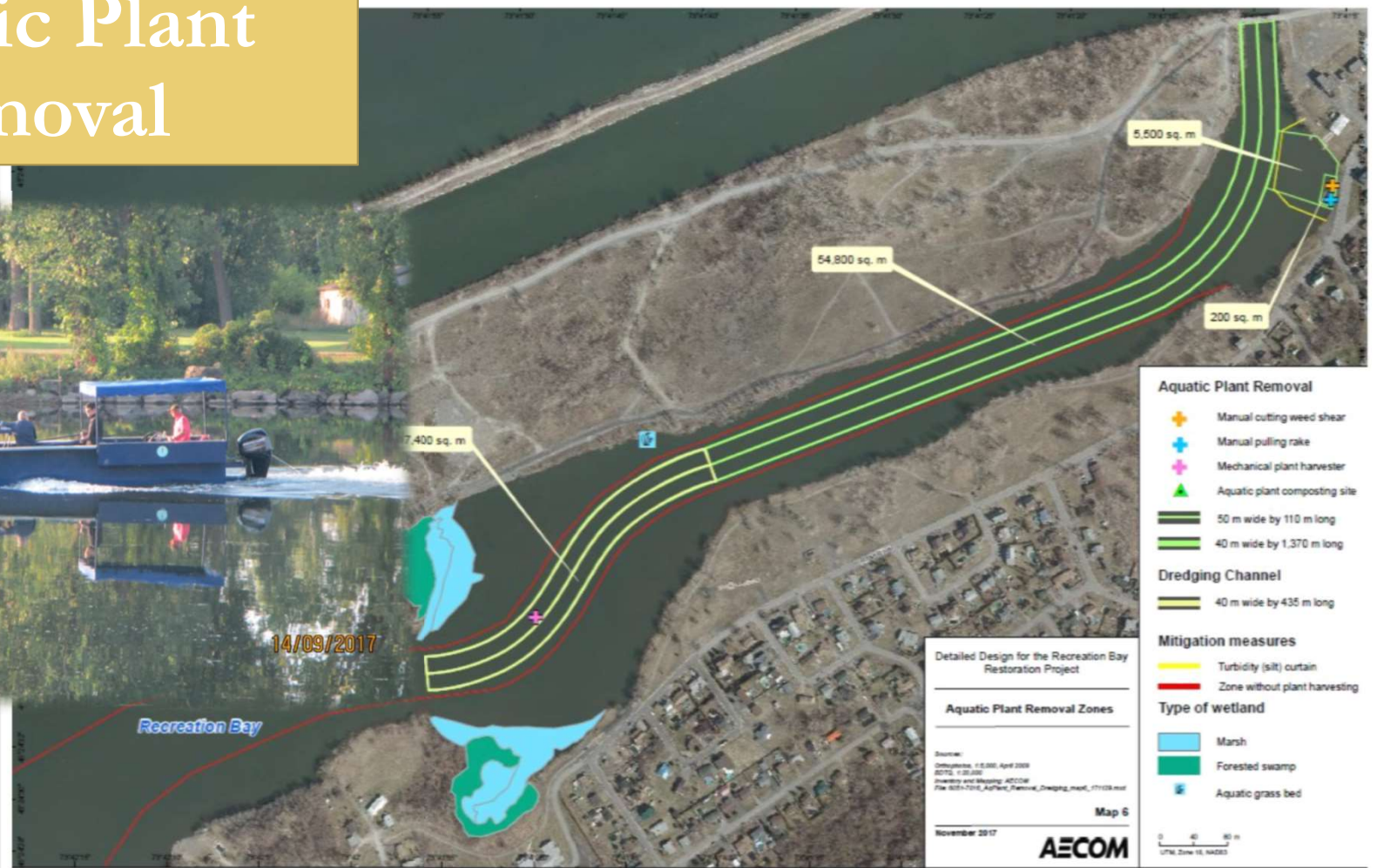
Hydraulic dredging



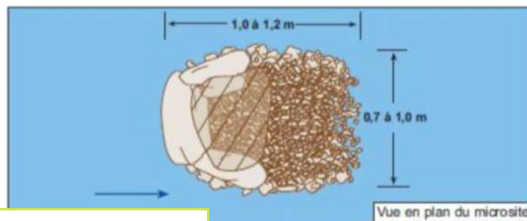
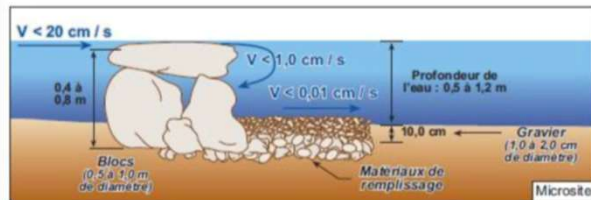




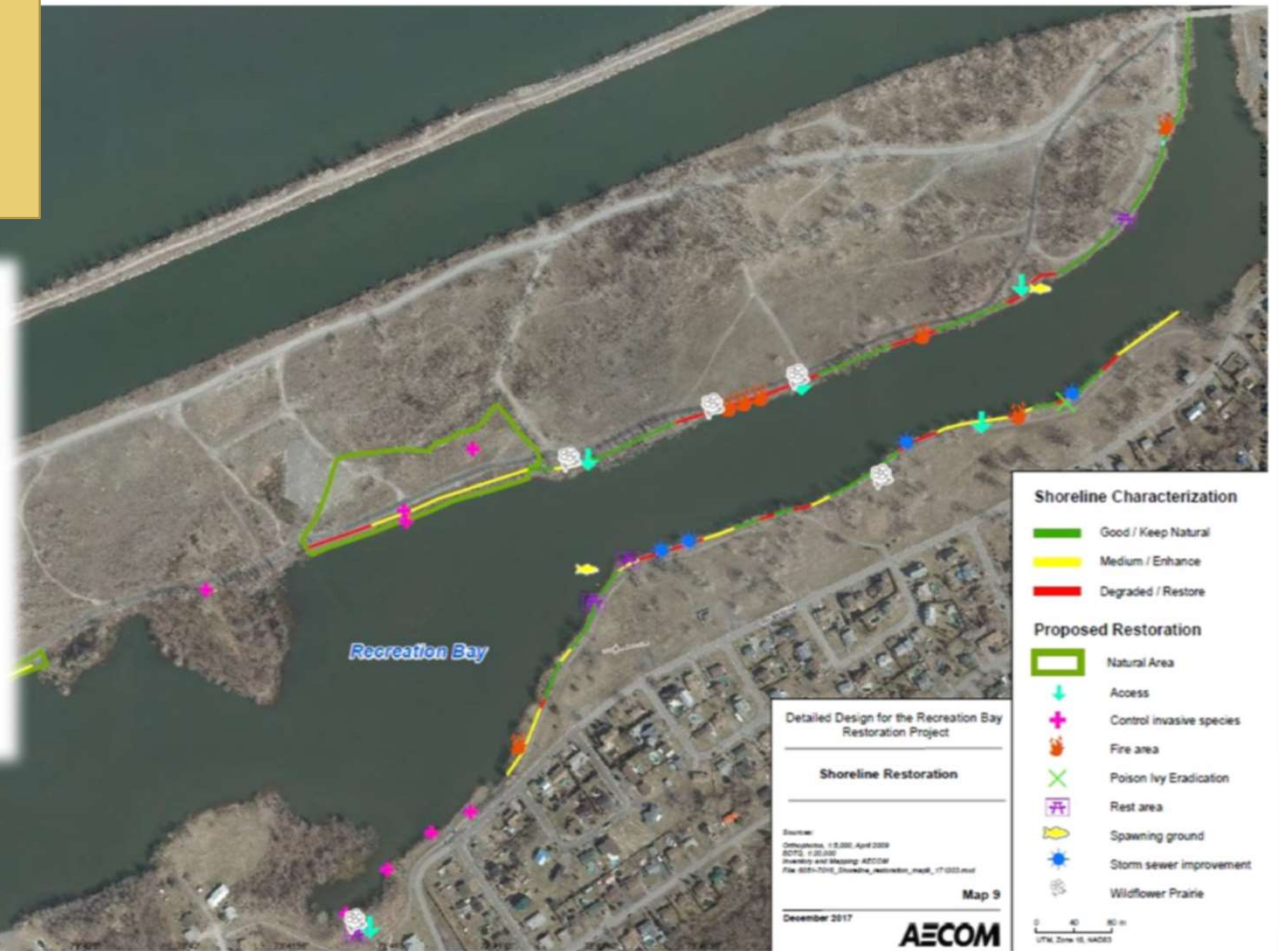
# Aquatic Plant Removal



# Shoreline Rehabilitation

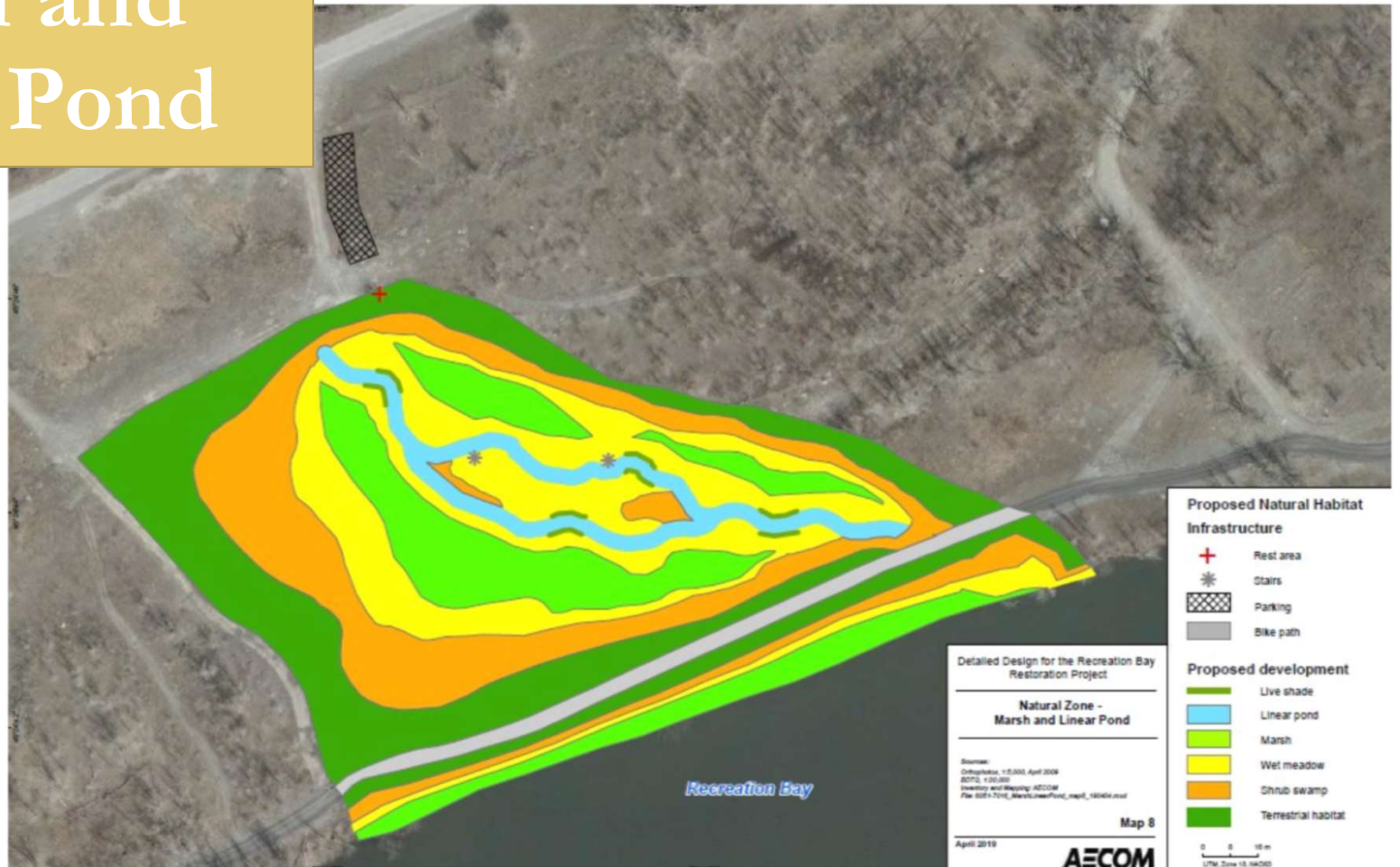


Fish Spawning Site





# Marsh and Linear Pond





# Natural Zone 1 – Turtle Beach

Eastern white cedar logs of 300 to 400mm in diameter and 5 m long

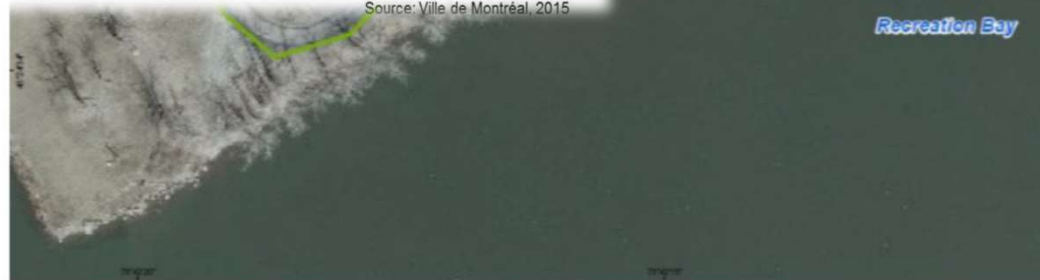
Galvanized steel clamping collar bolted to logs at each end

If several logs are used to reach the total length, they need to be attached with rings and chain

Attached galvanized steel chains to the bolted rings. The chain length must be at least 1.2 m longer than the distance between the log and the river bed

Galvanized steel chains are fixed to 2 concrete blocks of at least 45 kg each

Source: Ville de Montréal, 2015



Detailed Design for the Recreation Bay Restoration Project

Natural Zone - Turtle Nesting Ground

Source:  
Orthophoto, 1:5,000, April 2008  
BDT5, 1:25,000  
Inventory and Mapping, AECOM  
File: 000-1716\_TurtleNestingGround\_map7\_171003.mxd

Map 7

December 2017

AECOM

0 5 10 m  
UTM Zone 18, NAD83



# Beach





# Pollinator Garden/Soil Enhancement



# Fire Pit





# Rest Area





# Access Points





# Storm Sewer Rehab







NIÁ:WEN

Kahnawà:ke Environment Protection  
Office – 450.635.0600

[KEPO@mck.ca](mailto:KEPO@mck.ca)

[www.kahnawakeenvironment.com](http://www.kahnawakeenvironment.com)

